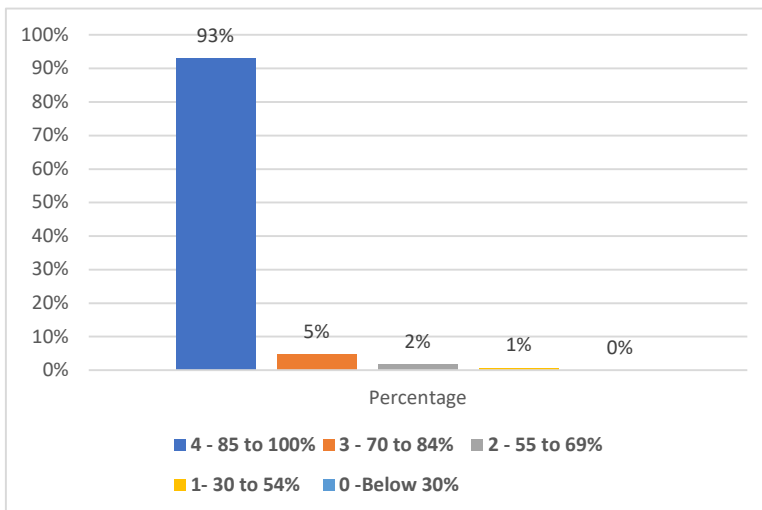


## Responses on Student Satisfaction Survey on Teaching Learning Process

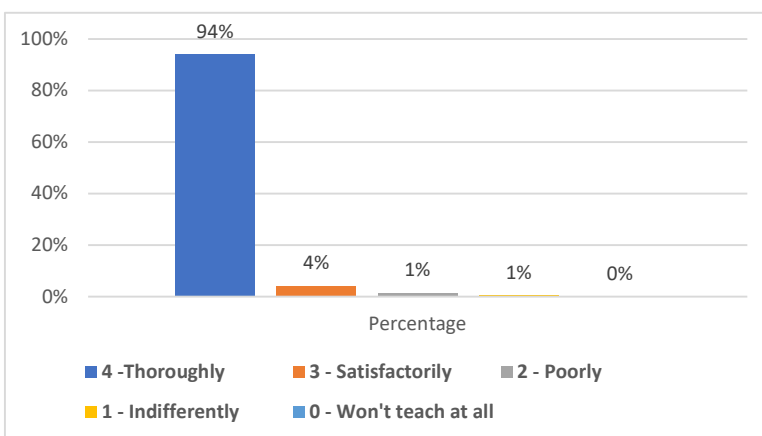
Question 1) How much of the syllabus was covered in the class?

Options	Percentage
4 - 85 to 100%	93%
3 - 70 to 84%	5%
2 - 55 to 69%	2%
1 - 30 to 54%	1%
0 -Below 30%	0%



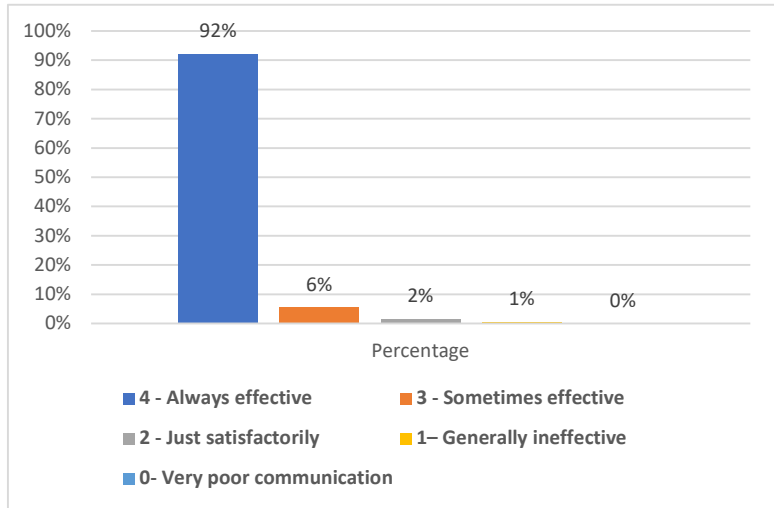
Question 2) How well did the teachers prepare for the classes?

Options	Percentage
4 -Thoroughly	94%
3 - Satisfactorily	4%
2 - Poorly	1%
1 - Indifferently	1%
0 - Won't teach at all	0%



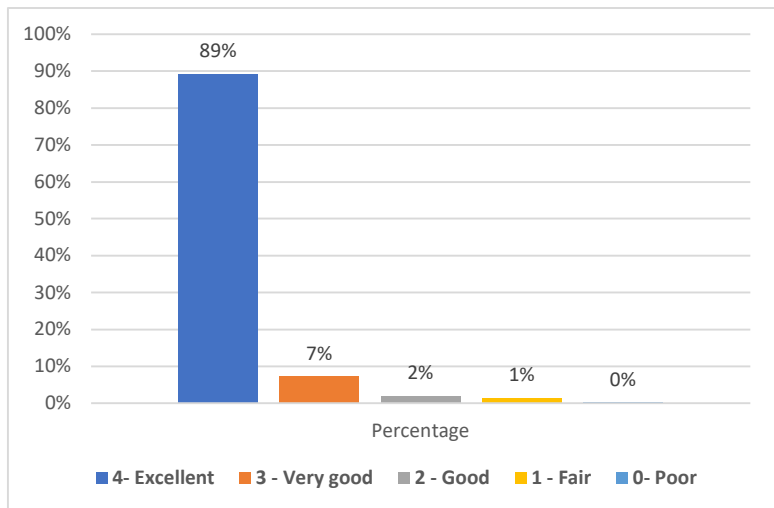
**Question 3) How well were the teachers able to communicate?**

Options	Percentage
4 - Always effective	92%
3 - Sometimes effective	6%
2 - Just satisfactorily	2%
1- Generally ineffective	1%
0- Very poor communication	0%



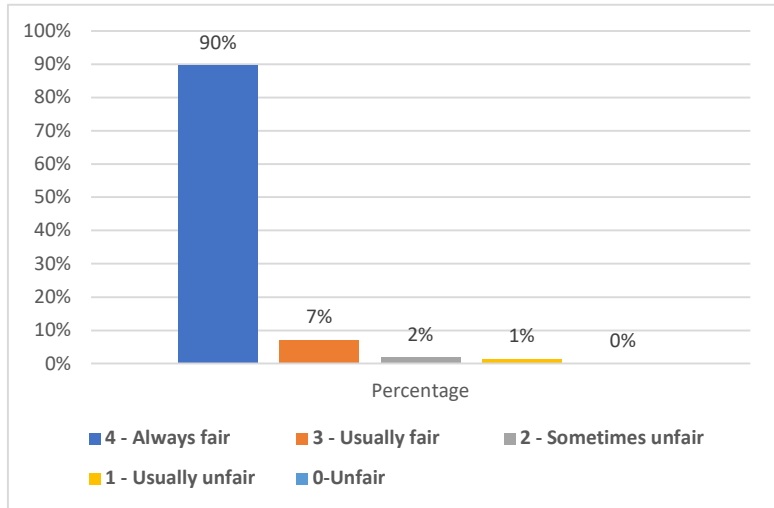
**Question 4) The teacher's approach to teaching can best be described as**

Options	Percentage
4- Excellent	89%
3 - Very good	7%
2 - Good	2%
1 - Fair	1%
0- Poor	0%



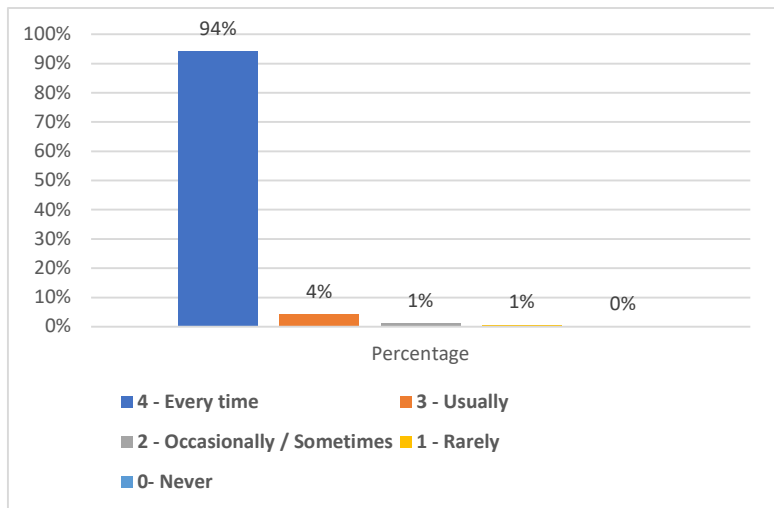
**Question 5) Fairness of the internal evaluation process by the teachers**

Options	Percentage
4 - Always fair	90%
3 - Usually fair	7%
2 - Sometimes unfair	2%
1 - Usually unfair	1%
0-Unfair	0%



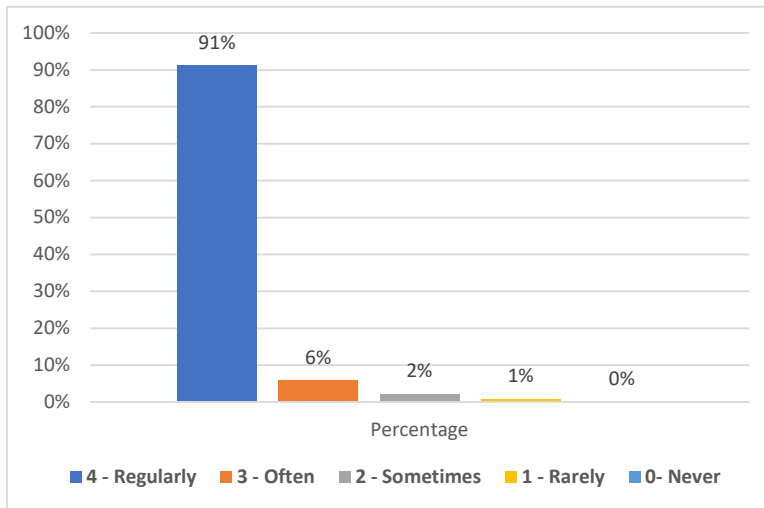
**Question 6) Was your performance in assignments discussed with you?**

Options	Percentage
4 - Every time	94%
3 - Usually	4%
2 - Occasionally / Sometimes	1%
1 - Rarely	1%
0- Never	0%



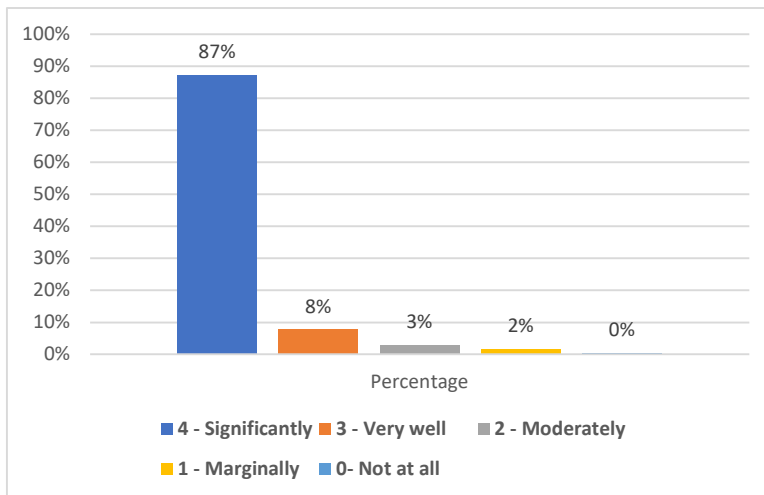
**Question 7) The institute takes active interest in promoting internship, student exchange, field visit opportunities for students.**

Options	Percentage
4 - Regularly	91%
3 - Often	6%
2 - Sometimes	2%
1 - Rarely	1%
0- Never	0%



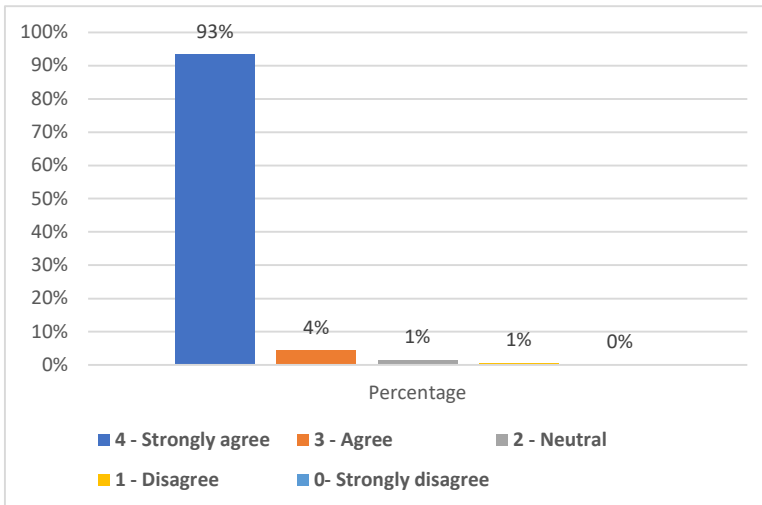
**Question 8) The teaching and mentoring process in your institution facilitates you in cognitive, social and emotional growth.**

Options	Percentage
4 - Significantly	87%
3 - Very well	8%
2 - Moderately	3%
1 - Marginally	2%
0- Not at all	0%



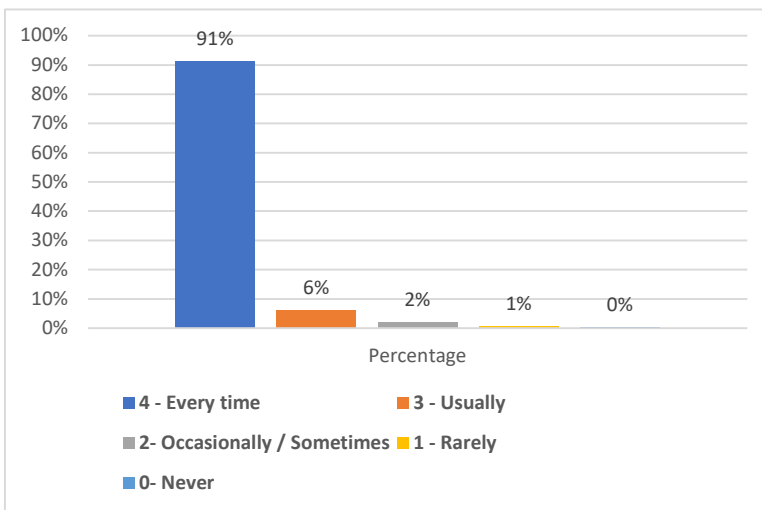
**Question 9) The institution provides multiple opportunities to learn and grow.**

Options	Percentage
4 - Strongly agree	93%
3 - Agree	4%
2 - Neutral	1%
1 - Disagree	1%
0- Strongly disagree	0%



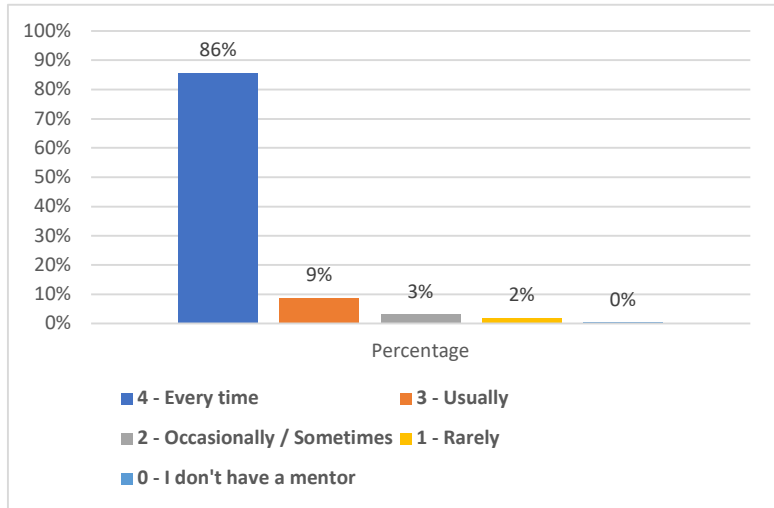
**Question 10) Teachers inform you about your expected competencies, course outcomes and programme outcomes.**

Options	Percentage
4 - Every time	91%
3 - Usually	6%
2- Occasionally / Sometimes	2%
1 - Rarely	1%
0- Never	0%



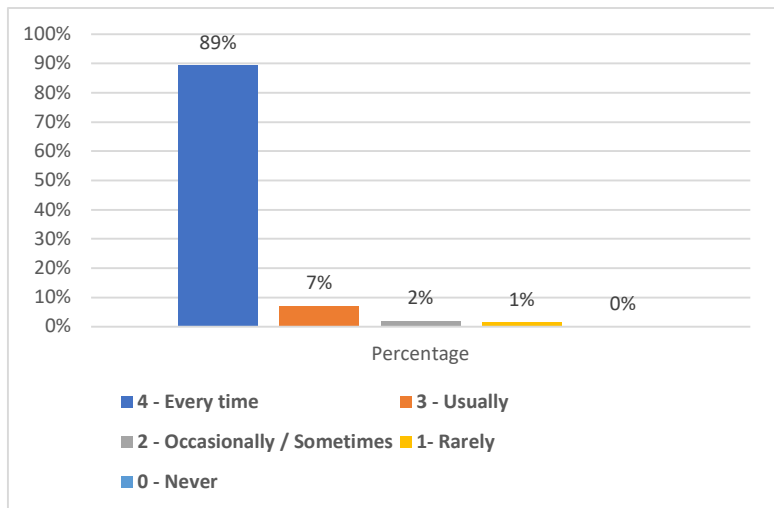
**Question 11) Your mentor does a necessary follow-up with an assigned task to you.**

Options	Percentage
<b>4 - Every time</b>	<b>86%</b>
<b>3 - Usually</b>	<b>9%</b>
<b>2 - Occasionally / Sometimes</b>	<b>3%</b>
<b>1 - Rarely</b>	<b>2%</b>
<b>0 - I don't have a mentor</b>	<b>0%</b>



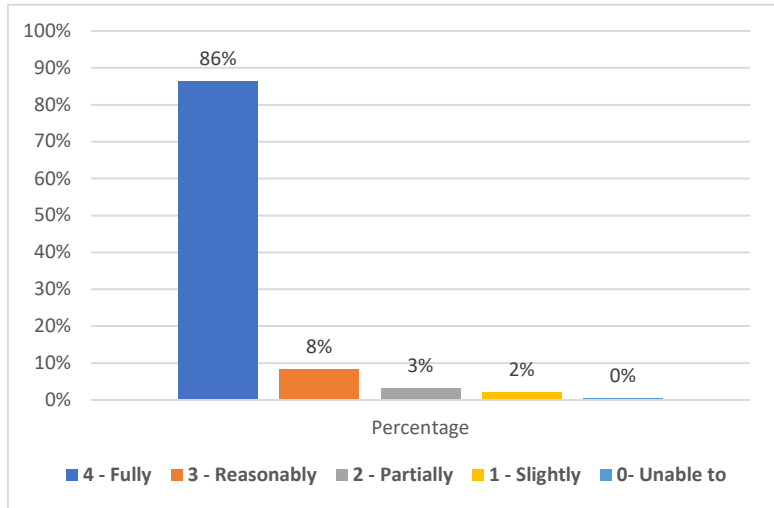
**Question 12) The teachers illustrate the concepts through examples and applications.**

Options	Percentage
<b>4 - Every time</b>	<b>89%</b>
<b>3 - Usually</b>	<b>7%</b>
<b>2 - Occasionally / Sometimes</b>	<b>2%</b>
<b>1- Rarely</b>	<b>1%</b>
<b>0 - Never</b>	<b>0%</b>



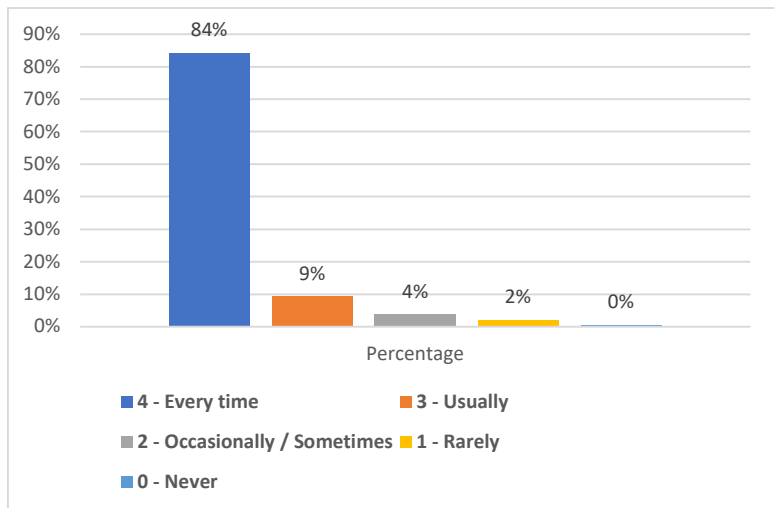
**Question 13) The teachers identify your strengths and encourage you with providing right level of challenges.**

Options	Percentage
4 - Fully	86%
3 - Reasonably	8%
2 - Partially	3%
1 - Slightly	2%
0- Unable to	0%



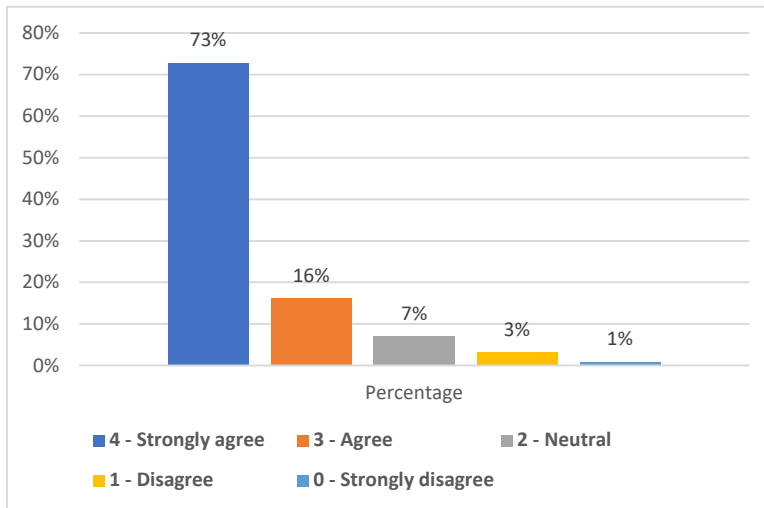
**Question 14) Teachers are able to identify your weaknesses and help you to overcome them.**

Options	Percentage
4 - Every time	84%
3 - Usually	9%
2 - Occasionally / Sometimes	4%
1 - Rarely	2%
0 - Never	0%



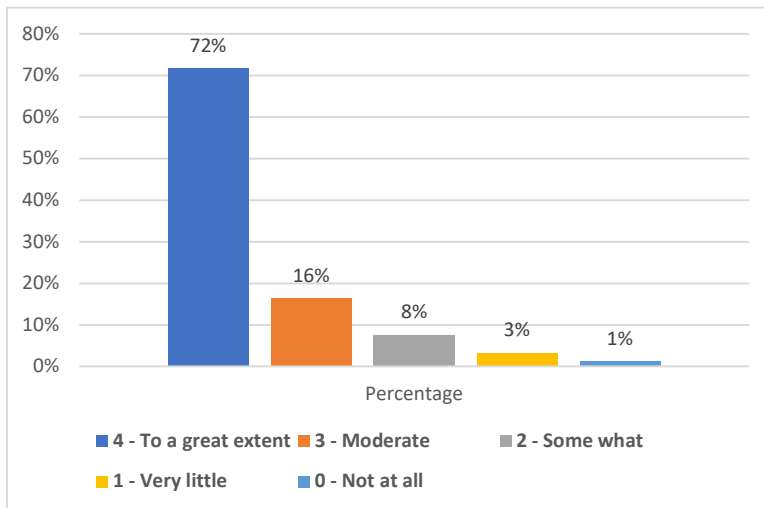
**Question 15) The institution makes effort to engage students in the monitoring, review and continuous quality improvement of the teaching learning process.**

Options	Percentage
4 - Strongly agree	73%
3 - Agree	16%
2 - Neutral	7%
1 - Disagree	3%
0 - Strongly disagree	1%



**Question 16) The institute/ teachers use student centric methods, such as experiential learning, participative learning and problem solving methodologies for enhancing learning experiences.**

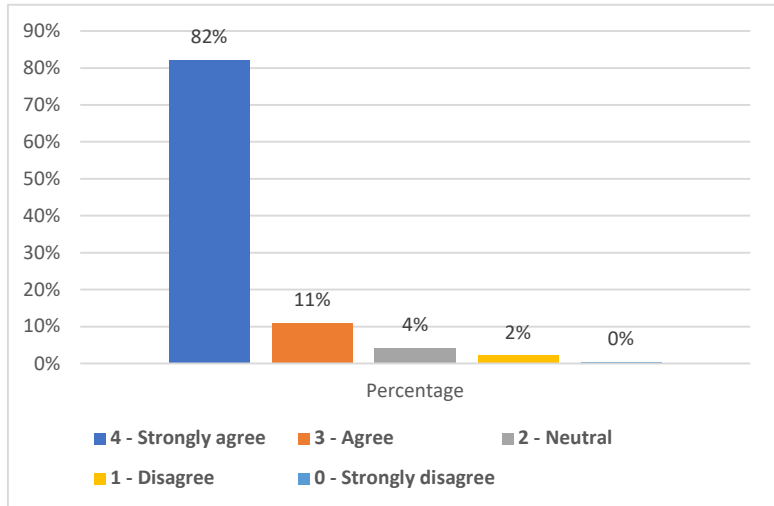
Options	Percentage
4 - To a great extent	72%
3 - Moderate	16%
2 - Some what	8%
1 - Very little	3%
0 - Not at all	1%





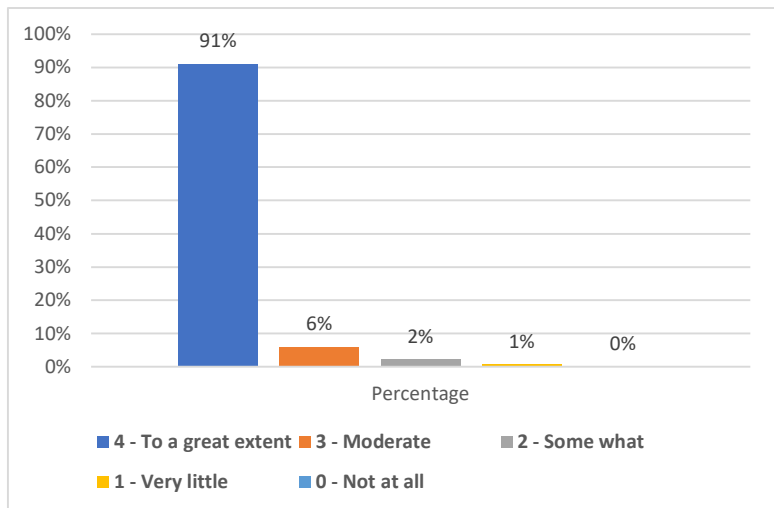
**Question 17) Teachers encourage you to participate in extracurricular activities.**

Options	Percentage
4 - Strongly agree	82%
3 - Agree	11%
2 - Neutral	4%
1 - Disagree	2%
0 - Strongly disagree	0%



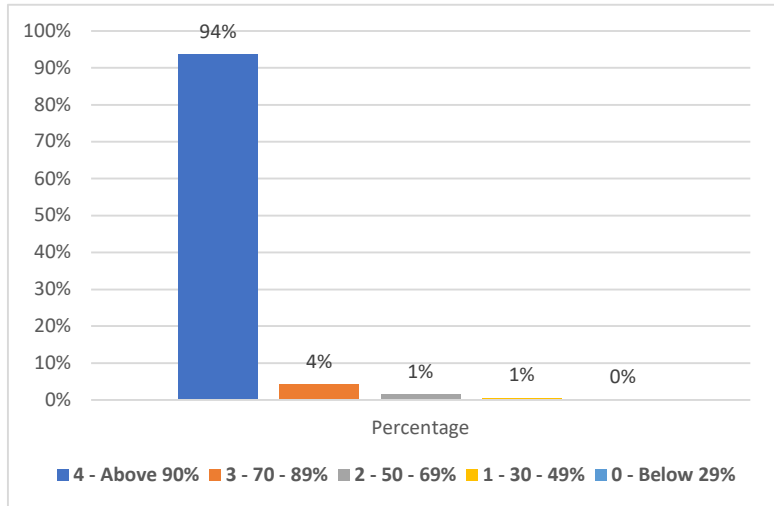
**Question 18) Efforts are made by the institute/ teachers to inculcate soft skills, life skills and employability skills to make you ready for the world of work.**

Options	Percentage
4 - To a great extent	91%
3 - Moderate	6%
2 - Some what	2%
1 - Very little	1%
0 - Not at all	0%



**Question 19) What percentage of teachers use ICT tools such as LCD projector, Multimedia, etc. while teaching.**

Options	Percentage
4 - Above 90%	94%
3 - 70 - 89%	4%
2 - 50 - 69%	1%
1 - 30 - 49%	1%
0 - Below 29%	0%



**Question 20) The overall quality of teaching-learning process in your institute is very good.**

Options	Percentage
4 -Strongly agree	96%
3 - Agree	3%
2 - Neutral	1%
1 - Disagree	0%
0 - Strongly disagree	0%

